

# GOVERNMENT FORMATION PROCESS OF SINT MAARTEN

The process of government formation occurs most commonly following a parliamentary election. Since there are no rules written in the Constitution on the procedure of forming a government, each process contains roughly the following steps:

## ELECTIONS



1

Eligible Sint Maarten residents with Dutch nationality elect fifteen representatives to parliament during general elections. Immediately after, the formation process for the new government begins.

## NOMINATION OF INFORMATEUR(S)

2

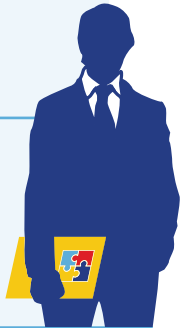
The governor initiates the formation of a new government by appointing one or more informateurs. It is the role of the informateur to advise on which parties are best suited to form a coalition. If parties have a majority and agree with each other, the governor can decide to skip the information phase and appoint a formateur directly.



## INFORMATEUR REPORT

3

After meeting with all parties and analyzing their common goals and key policy themes, the informateur reports his/her findings and recommendations on the best durable coalition back to the governor.



## NEGOTIATION

4

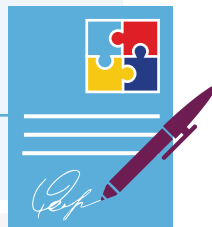
The recommended parties start to negotiate on the possibilities of working together and discuss what primary issues and differences should be the subject of these negotiations.



## FORMATION OF THE COALITION

5

The negotiating parties finalize their coalition accord by agreeing on the formation of a parliamentary coalition.



## NOMINATION OF FORMATEUR

6

The governor appoints the formateur, generally this is the candidate most likely to become the next prime minister. It is the task of the formateur to form a new cabinet of ministers.



## FORMATION PHASE

7

The formateur guides the formation process. It is completed when candidate ministers are selected, screened and a governing program, detailing what policies the incoming government will pursue, is presented by the governing coalition.

## INSTALLATION OF NEW CABINET

8

The new cabinet of ministers is appointed and installed by the governor. This signals the start of the new government.

